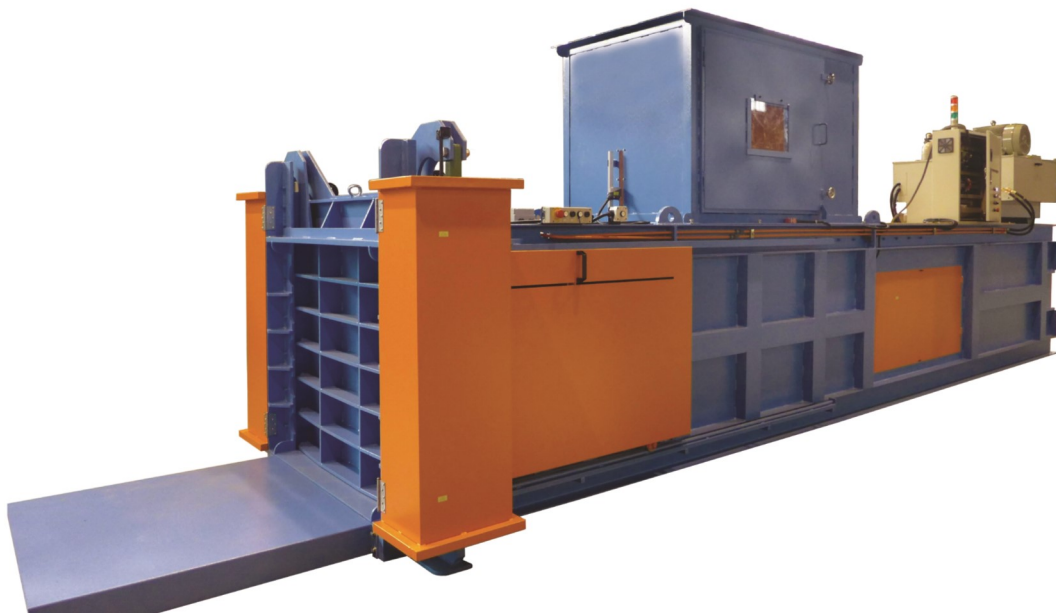




Whitham Mills
ENGINEERING

SEMI-AUTOMATIC BALER SPECIFICATION SHEET:

	7511CSSS-1802	7511CSS-1802	1175CSS	1575CSS	1111CSS
Hp/Kw	15Kw	15Kw	15Kw	22Kw	15Kw
Feed opening (mm)	1200 x 710mm	1600 x 710mm	1600 x 1064mm	900 x 1470mm	1800 x 1120mm
Bale size (mm)	750 x 1100 x 1200mm	750 x 1100 x 1500mm	1100 x 750 x 1500mm	1500 x 750 x 1050mm	1100 x 1100 x 1500mm
Ram force (tons)	53	53	65	65	65
Cycle time	34.2	34.2	45	28	49
No. of wire ties	5	5	4	6	5
Machine weight	5.5	7.5	8.2	9.1	10.2
Dimensions (mm)	6400 x 1760 x 2562mm	7800 x 1760 x 2562mm	7965 x 2050 x 2012mm	5500x1962x1700mm	8900x2762x1500mm
Bale weight (OCC)	500kg	500kg	600kg	700kg	750kg
Throughput	3 bales per hour	3 bales per hour	3 bales per hour	3 bales per hour	3 bales per hour
Key feature	Compact size	Small product only	Larger products	Wide mouth	Large feed opening



Whitham Mills Engineering Limited
Unit 70 Whitbrook Way,
Stakehill Industrial Estate,
Manchester,
M24 2SS



(+44) 01706 811880



Sales@whithammills.com
Service@whithammills.com
Projects@whithammills.com